



StuCON



Rashid Latif Medical College And Rashid Latif Khan
University, Welcome you to

SECOND INTERNATIONAL STUCON

Shaping The Future: Disruptive Strategies For Sustainable Solutions

22nd August, 2025



HOSTED BY



RLK Group



**HAMEED LATIF
HOSPITAL**



**RASHID LATIF
KHAN UNIVERSITY**



**RASHID LATIF
MEDICAL COMPLEX**



**ARIF MEMORIAL
TEACHING HOSPITAL**



**RLKU
MEDICAL COLLEGE**



**HAMEED LATIF
TEACHING HOSPITAL**



**Lahore Institute of
Fertility & Endocrinology**



Talat Rashid Trust

VISION, MISSION & OUTCOMES

VISION

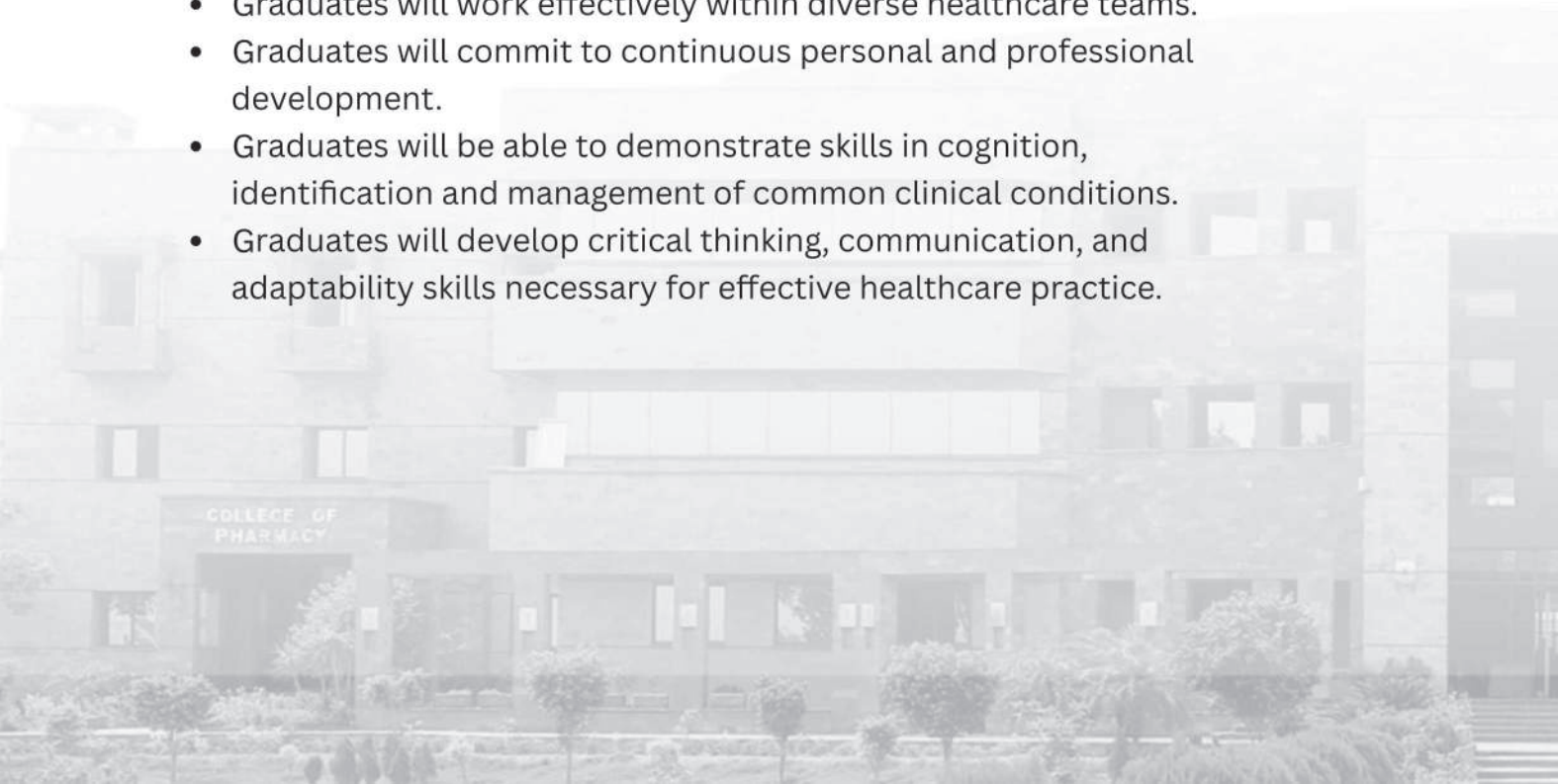
To become the Centre of excellence in the Field of Health sciences.

MISSION

Empower Healthcare professionals with state-of-the-art education, instilling leadership, innovation, and compassionate patient care for a transformative impact on the global health landscape.

OUTCOMES

- Graduates will possess advanced medical knowledge and competencies.
- Graduates will demonstrate effective leadership abilities in healthcare settings.
- Graduates will apply innovative solutions to complex health challenges.
- Graduates will provide empathetic and patient-centered care.
- Graduates will understand and address global health issues.
- Graduates will work effectively within diverse healthcare teams.
- Graduates will commit to continuous personal and professional development.
- Graduates will be able to demonstrate skills in cognition, identification and management of common clinical conditions.
- Graduates will develop critical thinking, communication, and adaptability skills necessary for effective healthcare practice.





WE ARE C.H.A.M.P.I.O.N.S,

C Critical And Innovative Thinkers

H Humane Leaders

A Accountable

M Motivated Team Players

P Perseverance

I Integrity

O Ownership

N Nobility

S Self-Discipline

, Professionalism

8. Letter From The Patron-in-Chief
10. Letters From The Patrons
13. Event Schedule
14. Event Layout
15. Code Of Conduct
16. Participation Criteria
17. Abstract Submission Guidelines
18. Oral Presentation
20. Poster Presentation And Template
22. Think Tank - Research Drill And Debate
20. MoHER
21. MED-MAZE

The background of the page is a solid blue color. Overlaid on this is a large, abstract graphic consisting of numerous thin, white, wavy lines that flow from the top left towards the bottom right, creating a sense of movement and depth. These lines are more densely packed in some areas, forming a shape that resembles a stylized, flowing letter 'C' or a series of connected arches.

TABLE OF CONTENTS

Letter From The Patron-in-Chief

Prof. Rashid Latif Khan

Dear Participants and Esteemed Colleagues,

I am delighted to welcome you to the upcoming Student Conference (StuCon). As the Patron-in-Chief of this pivotal event, I am honored to witness our academic community unite in pursuit of knowledge and innovation.

StuCon is designed to empower students for excellence in research, publication, and professional growth. Our aim is to create a platform that nurtures the next generation of healthcare professionals and researchers. By fostering collaborative learning and innovative thinking, we enhance participants' skills and cultivate a mindset that champions healthcare excellence.

Throughout the conference, participants will engage in oral presentations, poster sessions, think tanks, and more, offering opportunities to showcase research, exchange ideas, and learn from experts. This approach ensures participants gain a comprehensive understanding of their subjects and acquire practical skills that exceed expectations.

StuCon represents our commitment to advancing healthcare education and building a robust foundation for future professionals. By investing in the intellectual growth and practical skills of our students, we prepare them to meet today's challenges and shape the healthcare landscape of tomorrow.

I am confident that the dedication and enthusiasm of all participants, mentors, and organizers will make StuCon a resounding success.

With warm regards,
Prof. Rashid Latif Khan



Rashid Latif Khan



LETTER *from* THE PATRON



Prof. Tahir Masood Ahmad

It is with great pleasure that we announce the inaugural "StuCON" at Rashid Latif Medical College (RLMC), scheduled for August 22nd. Since its inception, initiated by a cadre of enterprising students, RLMC has thrived and grown steadily under successive cohorts of dedicated office holders and members. The sustainability of such initiatives often proves more daunting than their inception.

I extend sincere congratulations to the faculty and students for maintaining this momentum. I am hopeful that this effort will mature into a robust institution with deep roots and flourishing branches, spanning not only our institution but potentially the globe. The enthusiastic participation of medical students from numerous esteemed institutions is not only encouraging but also promises future collaboration in research endeavors.

History abounds with significant discoveries credited to undergraduate researchers, emphasizing the critical need for structured research training programs. Young minds require platforms and resources to express their innate creativity; RLMC serves as a beacon for such endeavors. I am confident that students worldwide will recognize their potential contributions to advancing undergraduate medical research and will enthusiastically join in its success.

I extend a cordial invitation to all interested institutions to encourage their students' participation in this esteemed conference. We eagerly anticipate your presence and meaningful contributions at StuCON 2025.

With warm regards,

Prof. Tahir Masood Ahmad

Tahir Masood Ahmad



LETTER *from* THE PATRON



Prof. Farrukh Zaman

Esteemed Colleagues & Participants,

Welcome to the upcoming Student Conference (StuCon), an event dedicated to empowering students in research, publication, and professional growth. As the chief supporter, I am honored to see our academic community unite for knowledge and innovation.

StuCon is more than academic discourse; it nurtures future healthcare professionals and researchers. By fostering collaborative learning and cutting-edge thinking, we aim to enhance participants' skills and promote innovation and excellence in healthcare.

Participants will engage in oral presentations, poster sessions, and brainstorming sessions, providing opportunities to showcase research,

exchange ideas, and learn from experts. This multifaceted approach ensures a comprehensive understanding of their subjects and practical skills.

StuCon represents our commitment to advancing healthcare education and building a strong foundation for future professionals. By investing in students' intellectual growth and practical skills, we prepare them to meet current challenges and shape the future of healthcare.

I am confident in the dedication and enthusiasm of all involved, making StuCon a success year after year. Let us learn, innovate, and create a thriving healthcare future together. I eagerly anticipate the transformative experiences and insights from StuCon.

With warm regards,
Prof. Farrukh Zaman

LETTER *from* THE PATRON



Ms. Sabahat Khan

Dear Esteemed Participants & Guests,

It is my privilege and delight to extend a heartfelt welcome to the inaugural National Integrated STUCON (Student Conference) at RLMC.

This gathering marks a significant milestone in our academic journey, celebrating the ingenuity and scholarly achievements of our students. It is a platform designed to showcase their research endeavors and innovative insights, while fostering a spirit of collaboration and intellectual growth.

Throughout the conference, attendees will have the opportunity to engage in a variety of enriching activities, including interactive workshops, insightful panel discussions, and dynamic presentations. These experiences are crafted to not only enhance academic skills but also to cultivate a sense of community and

shared learning among participants.

I extend my sincere appreciation to all who have contributed to the planning and execution of this event, ensuring its success and impact. Your dedication and enthusiasm are invaluable in creating a vibrant atmosphere for learning and discovery.

Together, let us embark on this journey of exploration and inspiration, aiming to forge connections and advance knowledge across Medicine, Dentistry, Nursing, Social Sciences, and Allied Health Sciences.

Thank you for your participation and I eagerly anticipate the contributions that will shape our collective experience at this momentous occasion.

With warm regards,

Ms. Sabahat Khan



08:00-09:00 AM		ARRIVAL & REGISTRATION			
09:00-11:00 AM		ORAL PRESENTATIONS			
MEDICINE & ALLIED LH-1	SURGERY & ALLIED LH-2	PHARMACY LH-4	DPT LH-3	BDS DENTAL COLLEGE	PSYCHOLOGY SEMINAR ROOM
THINK TANK LR-1	MEDMAZE DISSECTION HALL		MOHER PHARMACOLOGY LAB		
11:00-11:45 AM		INAUGURAL CEREMONY AUDITORIUM			
11:45-12:15 PM		REFRESHMENT/TEA			
12:15-02:00 PM		ORAL PRESENTATIONS			
POSTER PRESENTATIONS HELD AT THE RESPECTIVE DEPARTMENTS OR GROUND FLOOR	BASIC SCIENCES LH-1	BUSINESS & LAW LH-2	ALLIED & NUTRITION LH-3	NURSING LH-4	
02:00-03:00 PM		LUNCH & JUMMA BREAK			
03:00-04:30 PM		RAPID FIRE SESSION LH-1			
THINK TANK FINAL AUDITORIUM	MEDMAZE FINAL DISSECTION HALL		MOHER FINAL PHARMACOLOGY LAB		
04:30-05:30 PM		AWARD CEREMONY			
05:30 PM ONWARDS		SOCIAL EVENT & GALA DINNER			

EVENT LAYOUT



- **Treat** all participants with respect and consideration, regardless of their background, experience, or expertise.
- **Engage** in constructive and open dialogue, focusing on the ideas being discussed rather than personal attributes.
- **Avoid** any form of discrimination, harassment, or exclusionary behavior.
- **Uphold** the highest standards of professional conduct in all interactions, both within and outside of conference sessions.
- **Refrain** from disruptive or disrespectful behavior that could hinder the learning and networking experience of others.
- **Respect** the intellectual property rights of fellow participants by giving appropriate credit for ideas, concepts, and research shared during the conference.
- **Obtain** necessary permissions before using, sharing, or referencing another participant's work.
- **Treat** any sensitive information or discussions shared during the conference as confidential, unless explicitly granted permission to share.
- **Present** and discuss research findings accurately and honestly, adhering to ethical standards in research and publication.
- **Avoid** misrepresenting or exaggerating research results.
- **Foster** an environment of collaboration and the sharing of knowledge, encouraging the exchange of ideas and experiences.
- **Approach** networking opportunities with professionalism and courtesy.
- If you witness or experience any behavior that violates this code of conduct, promptly report it to conference organizers.
- A professional dress code should be followed.
- **Blinding:** participants and observers are instructed to conceal the college they represent.
- Wearing a uniform or adding college logos to your apparel or presentation is not permitted.

Failure to comply with this code of conduct may result in corrective action, including but not limited to, a warning, expulsion from the conference, or a ban from future events. We acknowledge that this code of conduct is designed to ensure the wellbeing and positive experience of all conference participants.



PARTICIPATION CRITERIA

- All investigators shall be undergraduates at least.
- A maximum of 2 investigators will present the research study to the judges for the poster presentations and 3 for oral presentations
- A team with a single research will not be allowed to participate in both oral and poster presentations with the same research
- Preliminary results of the research can be presented.
- Participation in the oral research presentation competition shall be subject to prior acceptance of the abstract
- A Mentor/supervisor can be present with each team.
- All observers should also register, there will be no on-the-spot registration.

RULES & REGULATIONS

- Please follow the schedule.
- Please remain seated and cordial during other participants' presentations.
- Please don't engage in heated conversation during question-answer sessions.
- Please turn off your phone or put it on silent.
- No smoking/Illegal substances are allowed inside the premises.
- Transparency will be shown in judging criteria by not using any official college affiliation before, during, and after any presentations and will only be revealed during the award ceremony.
- Please maintain the decorum of the conference. Instant disqualification on targeted attacks, unethical remarks & foul language.
- All participants are required to carry and present the identification cards provided during the registration process.
- Participants are responsible for keeping their personal belongings safe.

ABSTRACT SUBMISSION GUIDELINES

FOR BOTH ORAL & POSTER PRESENTATIONS

ELIGIBILITY CRITERIA

- Medical and allied students and post-graduates are eligible to apply.
- Completed original research, case reports, case series, systematic reviews, meta-analyses, and surveys can be submitted.
- Participation in research poster and oral presentation competition shall be subjected to prior acceptance of the abstract.

GUIDELINES

- Please select the option of participation in either an oral presentation or a poster competition.
- If you wish to take part in both Oral and Poster Presentations, kindly submit separate forms.
- A 200–250 word structured abstract with headings.
- The title must be flush to the left of the page, written in a sentence case.
- Author's names in upper and lower case, with attached information of their institutions as well as phone numbers.
- Short listed abstracts shall be informed through e-mails for participation in poster competition and oral presentation sessions.
- Structured Abstract: Title, Introduction (Background), Objectives, Methods, Results and Conclusion.
- Last Date of Abstract Submission is **1st August, 2025** at 11:59 p.m.

Hybrid Mode For Oral and Posters Presentations

ORAL PRESENTATION

OVERVIEW

Participants shall submit an abstract of their completed research which will be evaluated. Once accepted, they will be directed to make a Slideshow Presentation using a template that concisely explains their research.

On the day of the conference participants shall present their research to a panel of judges and an audience.

DETAILS

- Up to 5 participants can apply for an Oral Presentation.
- Only the first author and presenters' names need to be mentioned.
- Abstracts will be reviewed and shortlisted by the adjudication team by **10th August, 2025**. Decisions will be communicated via email.
- Selected participants must submit their PowerPoint presentations by **15th August, 2025** to the specified email.
- Research articles and case reports will be evaluated according to their rubrics, provided to judges via email and on the conference day.
- Presentations will be at the StuCon Research Conference on the **22nd of August, 2025** at Rashid Latif Medical College.
- Each participant has 8 minutes: 5 minutes for presentation and 3 minutes for Q&A.

PRESENTATION FORMAT

- Teams should have 3-5 participants.
- Up to 2 presenters per abstract.
- Total time: 8 minutes (5 minutes presentation, 3 minutes Q&A).
- Submit PowerPoints to **stucon@rlmc.edu.pk** by **15th August, 2025**.
- Use Arial font: Title (36-38pt), text (20-24pt).
- Background: plain white or light blue.
- Use either 16:9 or 4:3 format.

CONTENT REQUIREMENTS

- Include: Introduction, Objectives and Hypothesis, Materials and Methods, Results and Conclusion, and Limitations/Recommendations.

POSTER PRESENTATION

DETAILS

- A maximum of 2 participants can apply for Poster Presentation.
- After the initial evaluation, the submitted abstracts shall be shortlisted by the poster adjudication team by **10th August, 2025**.
- The decision on the abstracts shall be communicated to the participants through e-mail.
- Participants of the selected abstracts shall be asked to submit e-posters to the e-mail address: stucon@rlmc.edu.pk for 2nd adjudication by the respective judges, by **15th August 2025** at the latest.
- The submitted manuscripts will be evaluated as per their respective rubrics.
- The rubrics will be provided to the judges via email along with e-posters, for prior poster evaluation.
- Selected poster participants shall be invited to display their posters at StuCon'25 Research Conference i.e. on **22nd August 2025**, Rashid Latif Medical College, in the poster display arena.
- On the Conference days, the participants shall be asked to present their research and respond to the questions asked by the judges within 2-3 minutes. Marks will be added to the score gained from the e-poster evaluations.
- Kindly submit your abstracts on the Abstract Submission Form.

POSTER FORMAT

- The official poster size is A0, portrait (1189mm high and 841mm wide – maximum size)
- Each poster is permitted 1 x A0 display.
- You are required to prepare your poster in the correct sizing i.e. it is not suitable to prepare multiple smaller size sheets to display.

- It is suggested that poster presenters may use the following template attached when preparing their poster.
- It is mandatory for your poster to include the following headings: Title, Author list, Introduction (Background), Objectives, Methods, Results, and Conclusion.

POSTER INFORMATION

- All presenters are responsible for printing and preparing their posters before they arrive at the conference.
- Please note, the StuCon'25 Management will not be able to print your posters onsite.
- During the competition, a rule will be implemented to ensure impartiality: the judges will be blinded to all identifying details, including college name, area, institution, city, and hospital name. Each team will be identified solely by their assigned team code (provided on the day of the conference). This approach maintains fairness and prevents any bias based on affiliations.
- Your poster space allocation is A0 size, portrait (1189mm high and 841mm wide).

POSTER PRESENTATION

- Poster presenters are required to stand by their work during the presentation time.
- This is when delegates viewing posters will be able to interact with authors/ presenters to discuss their work.
- Selected posters will be asked to give a presentation to the judges which will occur at the designated presentation time.
- The presenter shall be asked to present their research and respond to the questions asked by the judges within 2-3 minutes. Marks will be added to the score gained from the e-poster evaluations.

POSTER TEMPLATE



Template For Poster Presentation – StuCon'24

John Smith, MD¹; Jane Doe, PhD²; Frederick Jones, MD, PhD^{1,2}



Abstract

Click here to insert your Abstract text. Type it in or copy and paste from your Word document or other source.

This text box will automatically re-size to your text. To turn off that feature, right click inside this box and go to **Format Shape, Text Box, Autofit**, and select the "Do Not Autofit" radio button.

To change the font style of this text box: Click on the border once to highlight the entire text box, then select a different font or font size that suits you. This text is Calibri 30pt and is easily read up to 4 feet away on an A0 poster.

Zoom out to 100% to preview what this will look like on your printed poster.

Methods and Materials

Click here to insert your Methods and Materials text. Type it in or copy and paste from your Word document or other source.

This text box will automatically re-size to your text. To turn off that feature, right click inside this box and go to **Format Shape, Text Box, Autofit**, and select the "Do Not Autofit" radio button.

To change the font style of this text box: Click on the border once to highlight the entire text box, then select a different font or font size that suits you. This text is Calibri 30pt and is easily read up to 4 feet away on an A0 poster.

Zoom out to 100% to preview what this will look like on your printed poster.

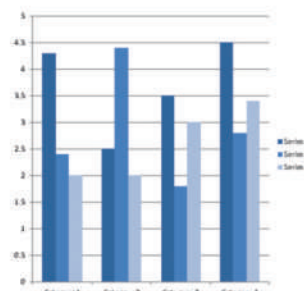


Chart 1. Label in 24pt Calibri.

Introduction

Geniographics® has provided this template to assist in preparation of a medical or scientific research poster. The dimensions are set to A0 international paper size (46.8" high by 33.1" wide) but prints can be scaled up or down in size to any dimension with the same aspect ratio. For example, if you order an A1 poster (33.1" high by 23.4" wide) using this template, we will print the file at 70.6% of its original size. **The most critical factor is that your template and poster dimensions must be proportional:**

$$\frac{\text{template height}}{\text{template width}} = \frac{\text{desired print height}}{\text{desired print width}}$$

Order your poster from Geniographics and we will perform a free design review and advise you if we see anything that may be a concern for printing. We'll even help tidy things up.

We have more history with PowerPoint® than any other printing company. In fact, we helped Microsoft® design the software and we created all of the original color themes, templates, and clip art galleries. We know how to make your printed poster look just like it does on screen. Other printing companies and copy centers will blindly convert your file to another format prior to printing. This can result in text shifting, symbols changing, and altered colors. We know the secrets to avoid those issues. So choose Geniographics for the most accurate reproduction available.



Figure 1. Label in 24pt Calibri.



Figure 2. Label in 24pt Calibri.

Results

Click here to insert your Results text. Type it in or copy and paste from your Word document or other source.

This text box will automatically re-size to your text. To turn off that feature, right click inside this box and go to **Format Shape, Text Box, Autofit**, and select the "Do Not Autofit" radio button.

To change the font style of this text box: Click on the border once to highlight the entire text box, then select a different font or font size that suits you. This text is Calibri 30pt and is easily read up to 4 feet away on an A0 poster.

Zoom out to 100% to preview what this will look like on your printed poster.

Speaking of Results, yours will look better if you remember to run a spell-check on your poster! After you've added your content click on **Review, Spelling**, or press F7.

Table 1. Label in 24pt Calibri.

	Heading	Heading	Heading
Item	800	790	4001
Item	356	856	290
Item	228	134	238
Item	954	875	976
Item	324	325	301
Item	199	137	186

Discussion

Click here to insert your Discussion text. Type it in or copy and paste from your Word document or other source.

This text box will automatically re-size to your text. To turn off that feature, right click inside this box and go to **Format Shape, Text Box, Autofit**, and select the "Do Not Autofit" radio button.

To change the font style of this text box: Click on the border once to highlight the entire text box, then select a different font or font size that suits you. This text is Calibri 30pt and is easily read up to 4 feet away on an A0 poster.

Zoom out to 100% to preview what this will look like on your printed poster.

Conclusions

Click here to insert your Conclusions text. Type it in or copy and paste from your Word document or other source.

This text box will automatically re-size to your text. To turn off that feature, right click inside this box and go to **Format Shape, Text Box, Autofit**, and select the "Do Not Autofit" radio button.

To change the font style of this text box: Click on the border once to highlight the entire text box, then select a different font or font size that suits you. This text is Calibri 30pt and is easily read up to 4 feet away on an A0 poster.

Zoom out to 100% to preview what this will look like on your printed poster.

Contact

<your name>
<your organization>
Email:
Website:
Phone:

References

1.
2.
3.
4.
5.
6.
7.
8.
9.
10.

THINK TANK

RESEARCH DRILL & DEBATE SEGMENT

OVERVIEW

Think Tank is an engaging, debate-style competitive activity designed to empower medical students with limited research experience to explore real-world healthcare issues through innovative thinking, evidence-based solutions, and teamwork. Participants present and defend their proposals before a panel of expert judges and a live audience.

ACTIVITY STRUCTURE

- **PRELIMINARY ROUND**
 - **Topic:** A real-world healthcare problem.
 - **Time Allocation:**
 - 1-hour brainstorming and research session
 - 6-minute presentation + 2-minute Q/A (per team)
 - **Objective:** Identify the problem, develop a viable solution, and present it using research-backed data.
- **FINAL ROUND (TOP 4 TEAMS)**
 - **New Topic:** Revealed only after finalists are announced.
 - **Format:**
 - 5-minute presentation
 - 3-minute scrutiny session (Q/A or rebuttals)
 - One follow-up allowed per team

TEAM GUIDELINES

- **Team Size:** 4–5 currently enrolled medical students
- **Tech Requirements:** One laptop per team
- **Team Integrity:** Members cannot switch or participate in multiple teams
- **Language:** All presentations must be delivered in English
- **Support Tools:** Visual aids such as slides or prototypes are encouraged

OUTCOMES

- **Winners** will be declared at the end of the event
- **Prizes/Recognition** for top-performing teams
- **Networking opportunity** with peers, judges, and healthcare innovators

MOHER

MINISTRY OF HEALTH & EPIDEMIOLOGICAL RESPONSE

OVERVIEW

MoHER is a high-stakes crisis simulation placing students in the roles of national policymakers, public health officials, and international collaborators during a public health emergency. Participants face a rapidly unfolding HIV outbreak scenario, respond to media pressure, manage ART shortages, and collaborate to draft evidence-based national health policies.

This isn't just a debate—it's a **realistic leadership test** involving ethics, science, strategy, and diplomacy.

TEAM ROLES & RESPONSIBILITIES

Team	Represented Institution	Core Duties
Pulse	Ministry of Health	Lead outbreak control, ART supply, and national policy
Awaaz	Public Communication & Media	Counter misinformation, design awareness campaigns
Ittehad	WHO/Global Liaison	Coordinate with WHO/UNAIDS, secure international aid
Haq	Ethics & Human Rights Panel	Protect vulnerable groups, propose anti-discrimination laws
Nazm	Punjab Healthcare Commission	Audit clinics, investigate malpractice, suggest reforms

OUTCOMES

- Effective health policy development under pressure
- Public communication and misinformation control
- Strategic international collaboration
- Ethical response to public health emergencies
- Interdisciplinary teamwork in crisis scenarios

MEDMAZE

MEDVENTURE

OVERVIEW

Med-Maze is a dynamic, clue-driven escape room simulation where participants step into the roles of medical investigators to solve a complex, literature-backed forensic case. Combining elements from clinical medicine, public health, pharmacology, pathology, and toxicology, it transforms learning into an immersive diagnostic quest.

STATION THEMES & OBJECTIVES

Station	Discipline	Key Tasks
1	Community Medicine	Interpret outbreak data, assess personal exposure
2	Forensic Medicine	Analyze gunshot trajectory, toxicology, and foul play clues
3	Surgery & Radiology	Assess surgical care, wound management, and anatomical insights
4	Histopathology & Lab	Interpret liver/kidney slides and lab results to differentiate causes
5	Cipher & Puzzle	Decode lab logs, outbreak data, and timeline clues
6	Pharmacology & Toxicology	Evaluate drug exposure, side effects, and interaction potential

OUTCOMES

- Prizes or recognition awarded to winning teams.
- Emphasis on skill development in clinical reasoning, research literacy, and collaborative diagnostics.



THANK YOU

We greatly appreciate your presence at our conference. We eagerly anticipate your attendance and the contributions you will bring.
Thank you for being a part of this event.



stucon@rlmc.edu.pk
info@rlmc.edu.pk



049-2451091-7



35-KM, Ferozepur
Road, Lahore



@rlmcnationalstucon



StuCON

